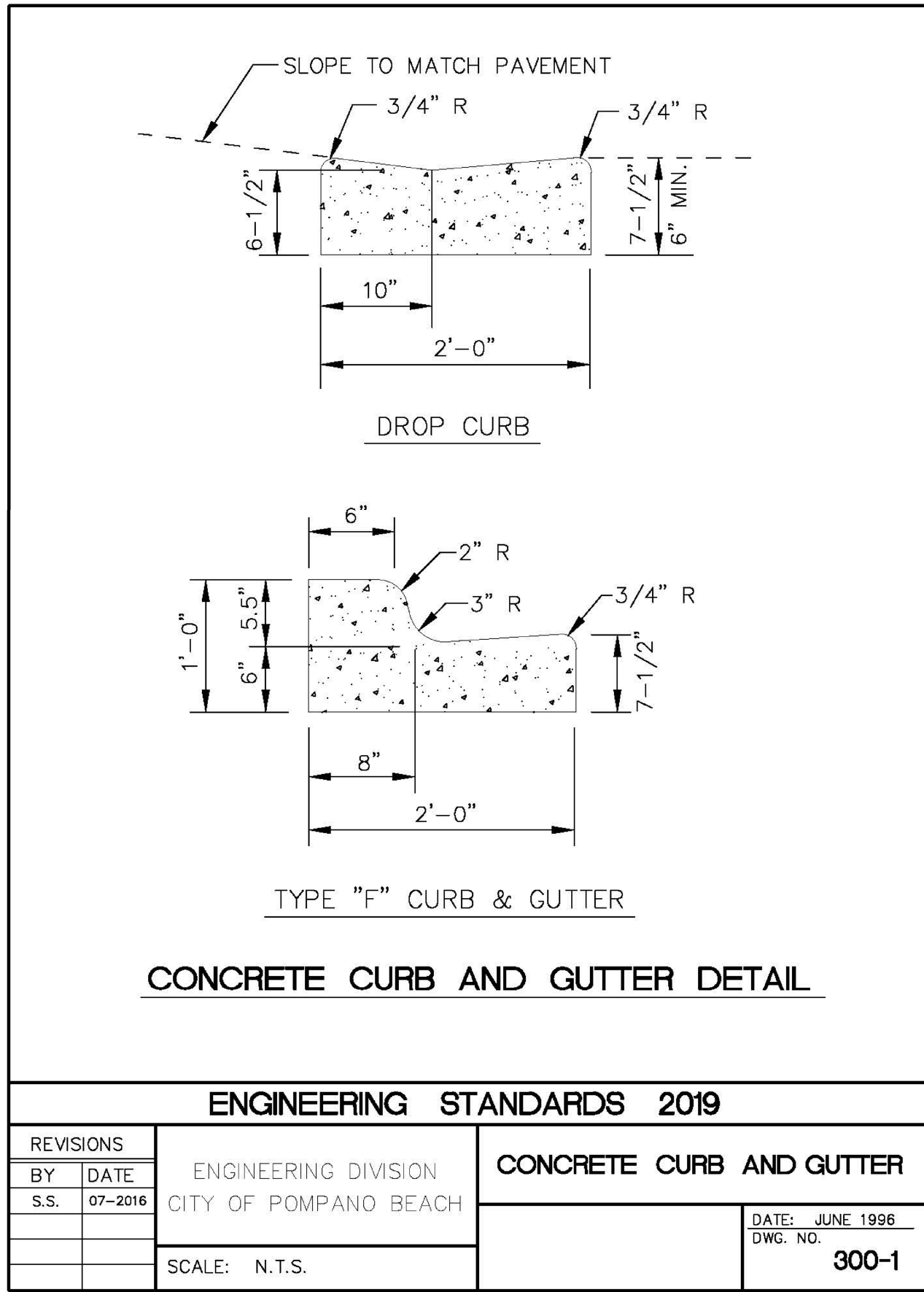
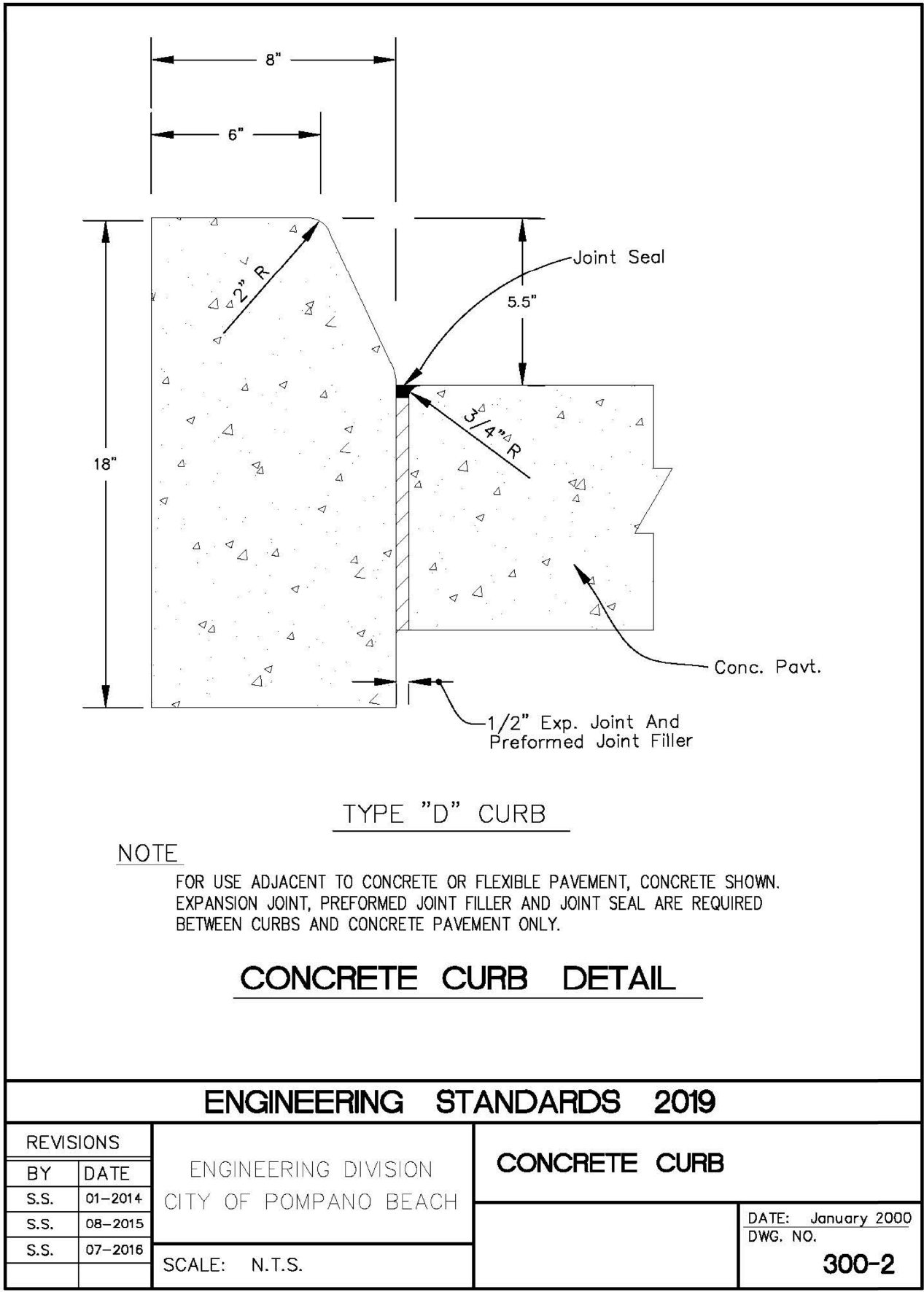


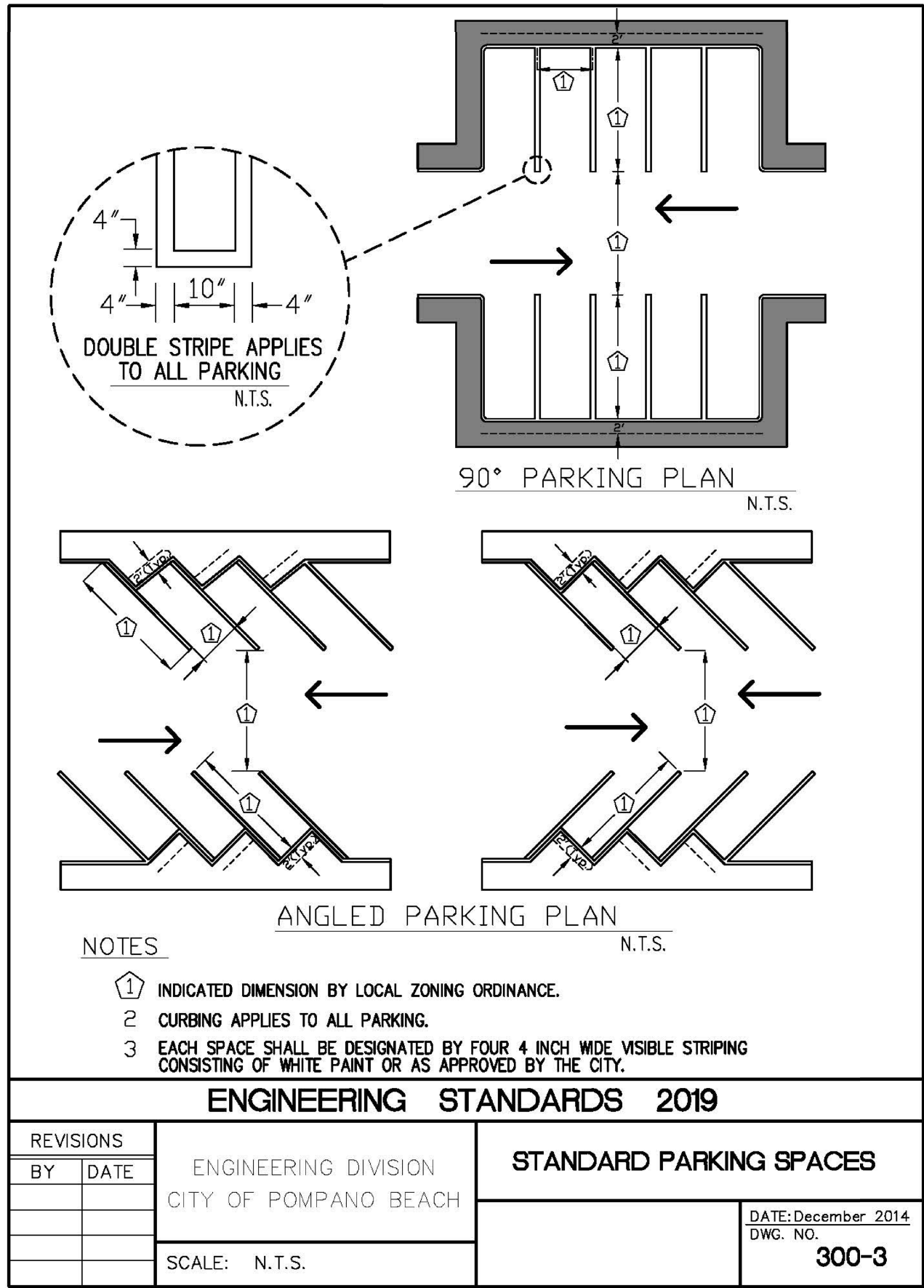
J:\City STANDARDS\2019 Standards Details\Misc. 3-1.dwg, 11/2/2018 10:42:37 AM



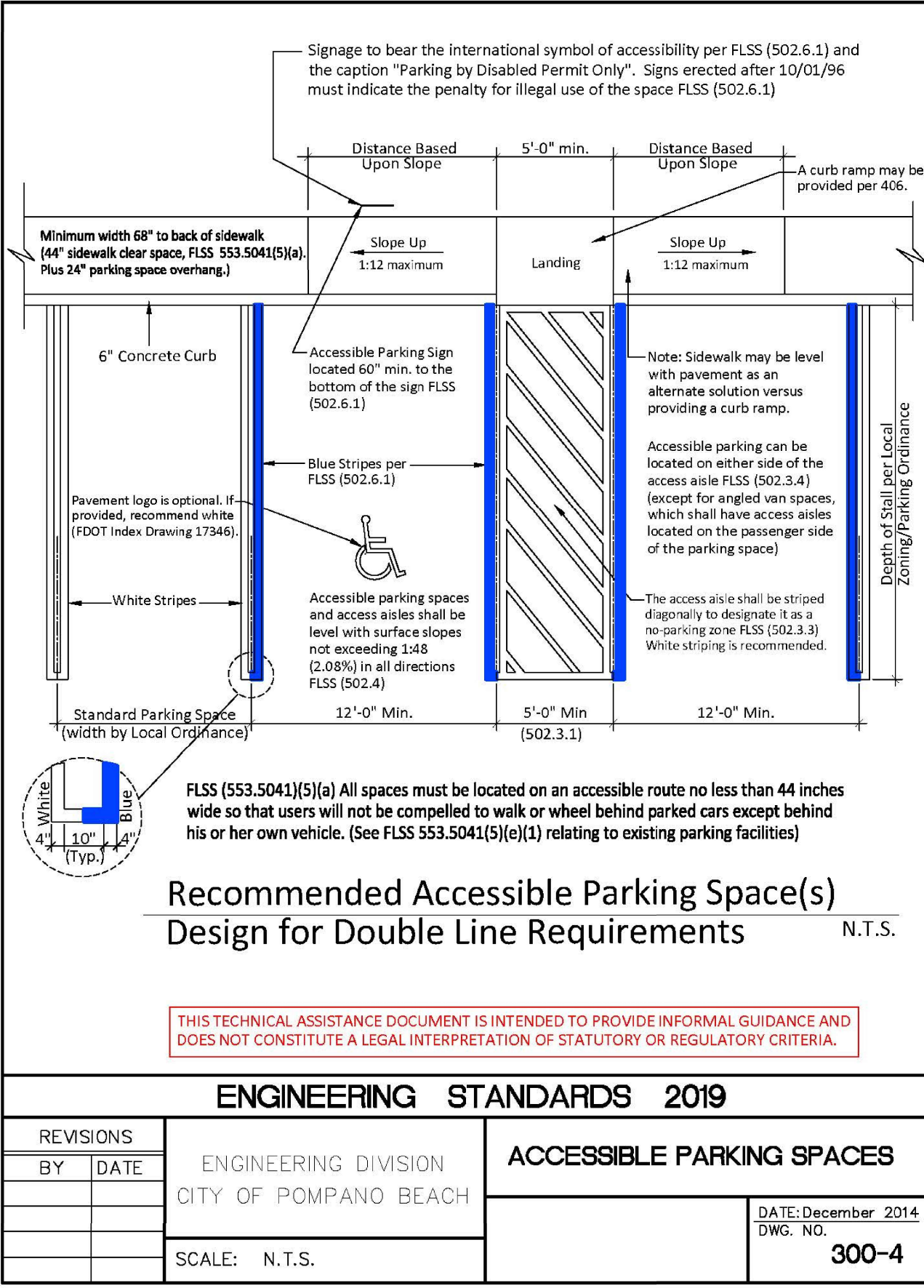
J:\City STANDARDS\2019 Standards Details\Misc. 3-1.dwg, 11/2/2018 10:43:24 AM



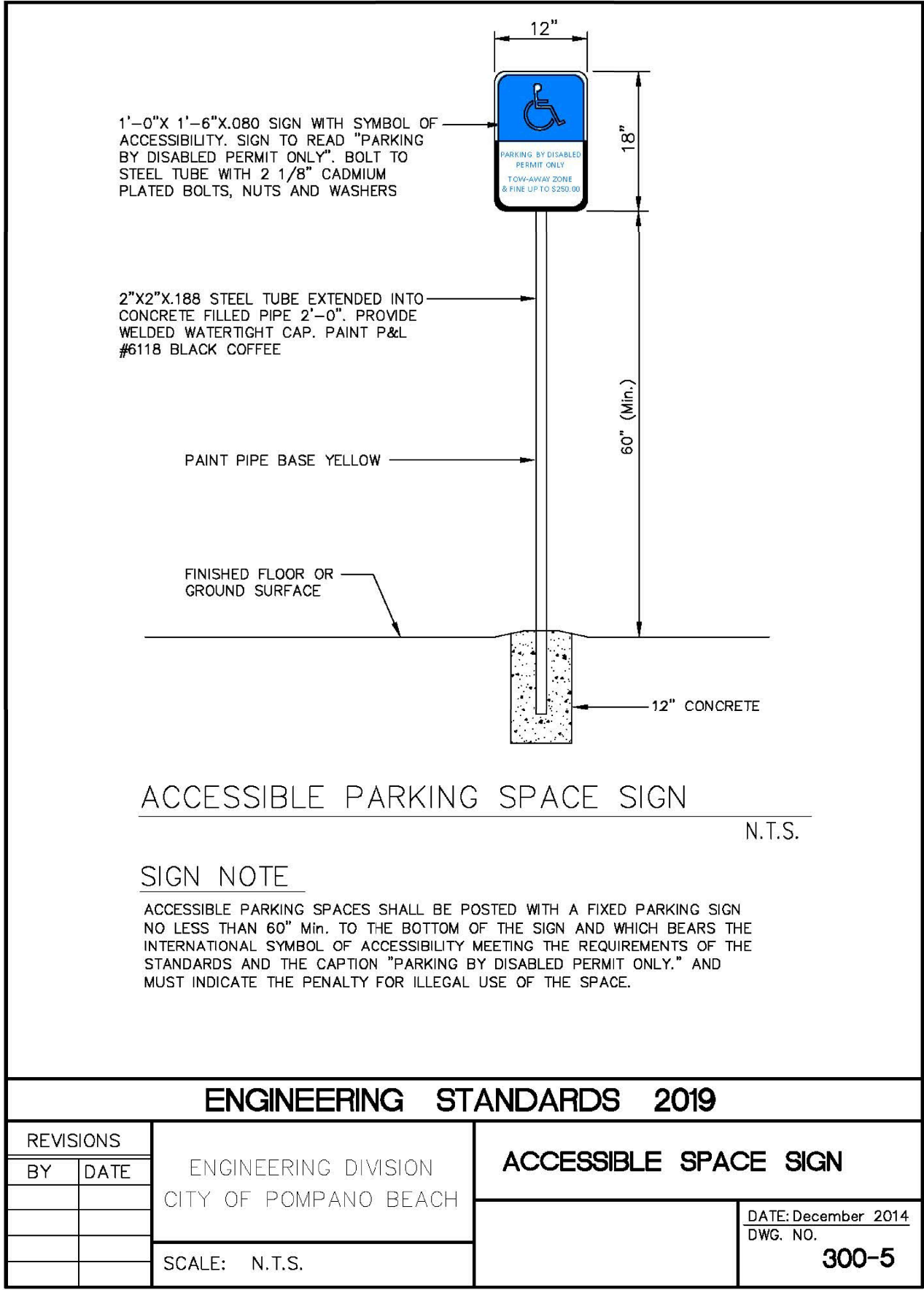
J:\City STANDARDS\2019 Standards Details\Misc. 3-1.dwg, 11/2/2018 10:44:18 AM



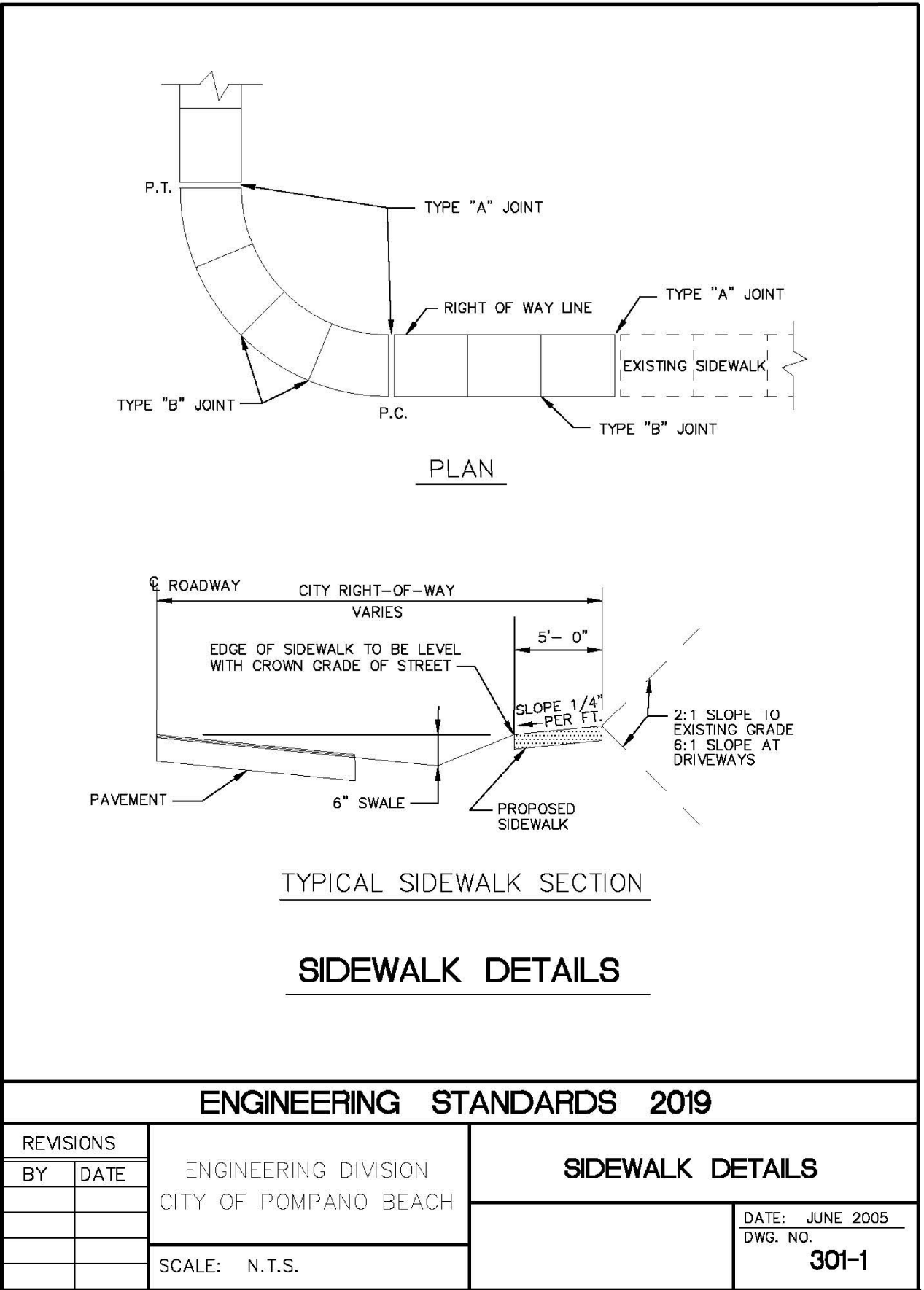
J:\City STANDARDS\2019 Standards Details\Misc. 3-1.dwg, 11/2/2018 10:44:42 AM



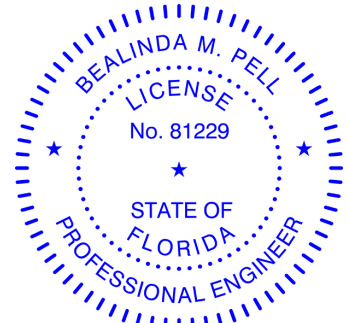
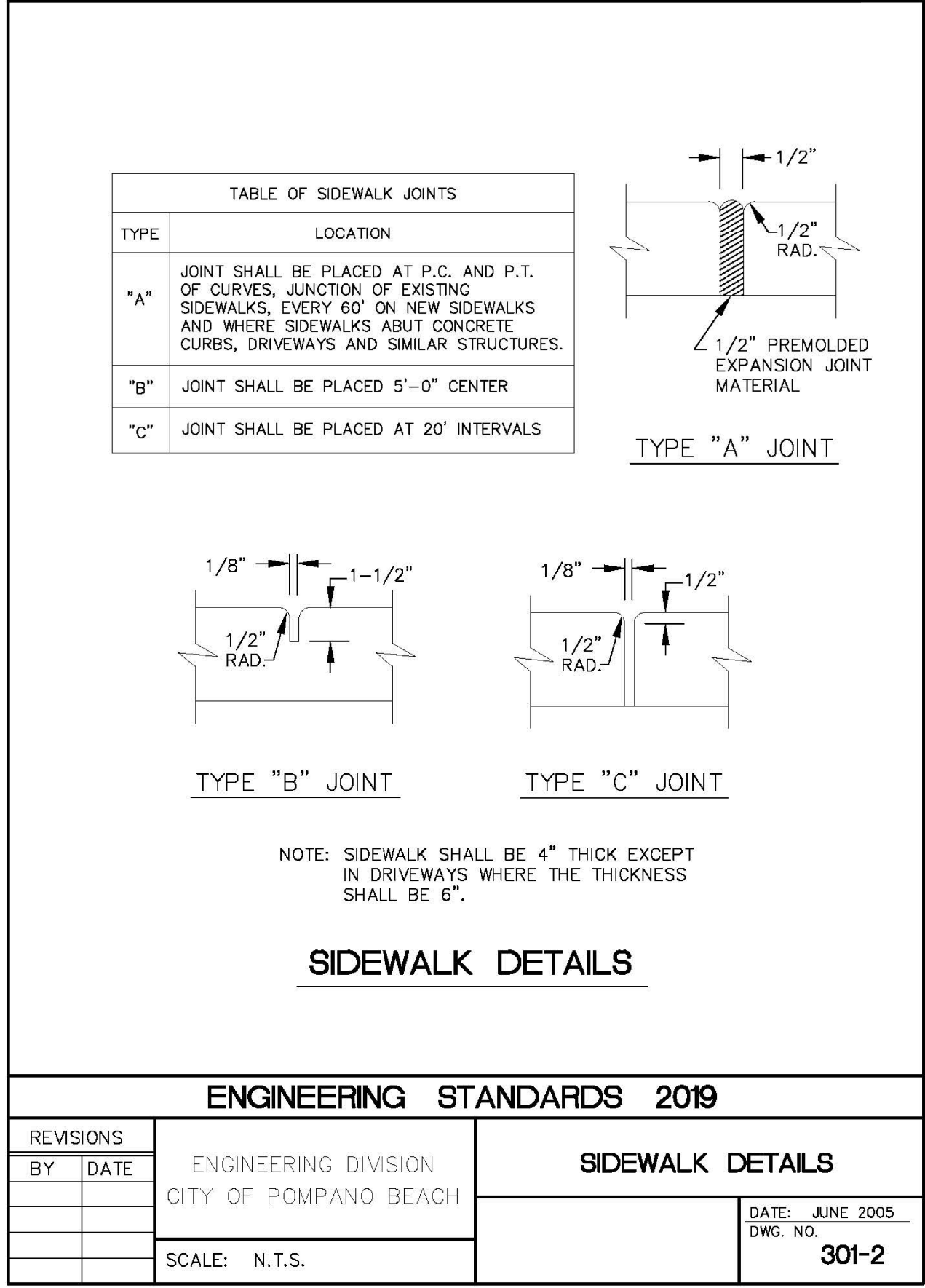
J:\City STANDARDS\2019 Standards Details\Misc. 3-1.dwg, 11/2/2018 10:45:07 AM



J:\City STANDARDS\2019 Standards Details\Misc. 3-1.dwg, 11/2/2018 10:45:49 AM



J:\City STANDARDS\2019 Standards Details\Misc. 3-1.dwg, 11/2/2018 10:46:13 AM



Digitally signed by Bealinda M Pell
DN: c=US, o=Florida,
dnQualifier=A01410D0000017FB6
C8143E00037A12, cn=Bealinda M
Pell

Date: 2023.08.22 19:12:28 -04'00'

